



GAZZDA

---

# Dedo Lounge Chair & Footstool

Product sheet

design by  
Salih Teskeredžić



reddot award 2016  
winner

# Dedo Lounge Chair & Footstool

## Product facts

### Materials

---

Body	Solid oak
Finish	Hardwax oil / black lacquer
Cushions	Leather or fabric upholstery

### Technical features

---

#### Frame

Dedo's frame is made out of solid wood - oak. Elastic cotton ropes are connecting the backrest with the frame, providing cushion support. Felten gliders are attached to the chair legs and are suitable for most flooring options, while the footstool comes in a curved rocking base and does not include gliders.

#### Upholstery

Seat cushion is attached to the frame body, while the back cushion is connected with the belts to the backrest frame. The lounge chair has additional height-adjustable head cushion. Two material options for upholstery are available: leather or fabric, while cushion belts are always in leather options. For further information please see Available materials and colours page in this document.

#### Finish

Wooden parts are available in two plant-based Hardwax oil finishes (colours), which retain the wood's natural state, as a white or natural oil or as a black lacquered option.

#### Cleaning

Please see [Product](#) or [Material](#) page on our website.

### Notes to consider

---

#### Variations

Natural variations in wood color and surface may occur. Regular maintenance will ensure the wood preserves its authentic beauty and can last for generations.

#### Product changes

Please note that Gazzda reserves the right to alter construction and design without notice.

#### Dimensions (tolerances)

The dimensions shown are indicative, they may vary due to the natural properties of wood, season, or manufacturing processes. Deviations from the specified size may occur, usually no more than 1 cm.

For all additional inquiries regarding Dedo Lounge Chair and Dedo Footstool please feel free to [contact us](#).

# Dedo Lounge Chair

Base Solid oak, Seat / backrest Upholstered



reddot award 2016  
winner

Version: 5-2-2024

## Basic info

**Design** Salih Teskeredžić

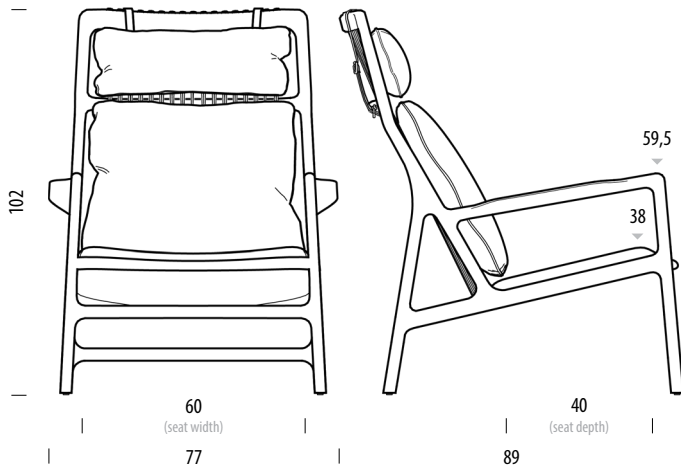
**Product size** W: 77, D: 89, H: 102

**Packaging** W: 80, D: 90,5, H: 106,5

**Volume** 0,77 m<sup>3</sup>

**Net weight** 11,2 kg

**Gross weight** 16,8 kg



## Item no. 091

Assembled product

Dimensions	Width	Depth	Height
Seat	60	40	38
Armrest			59,5

# Dedo Footstool

Base Solid oak, Seat Upholstered

Version: 5-2-2024

## Basic info

**Design** Salih Teskeredžić

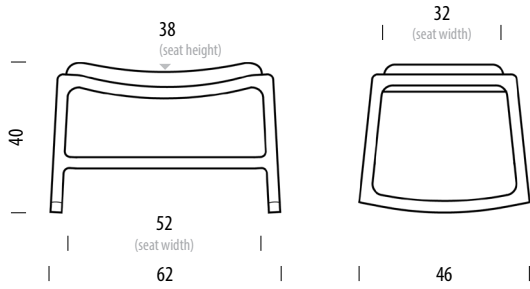
**Product size** W: 62, D: 46, H: 40

**Packaging** W: 64, D: 48, H: 43

**Volume** 0,13 m<sup>3</sup>

**Net weight** 4,4 kg

**Gross weight** 5,8 kg



### Item no. 092

Assembled product

Dimensions	Width	Depth	Height
Seat	52	32	38

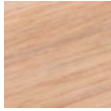
# Dedo Lounge Chair & Footstool

## Available materials

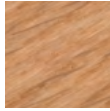
Version: 5-2-2024

### Body | Solid oak

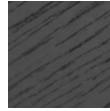
---



Oiled  
1015  
White oil



Oiled  
1505  
Natural oil

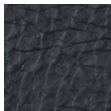


Lacquered  
RAL 9005  
Black

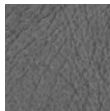
### Seat and cushions | Leather upholstery

---

#### Dakar - by Leder Reinhard



0500  
Black



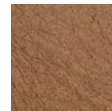
1258  
Grey



1436  
Stone

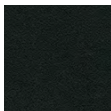


2732  
Whisky

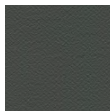


3411  
Nature

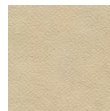
#### Deca vegan leather - by Camira



DEC20  
Downing



DEC05  
Decimal



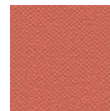
DEC03  
Digit



DEC07  
Decapod



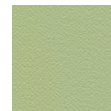
DEC14  
Fortune



DEC09  
Tien



DEC11  
Richter



DEC15  
Catenia

# Dedo Lounge Chair & Footstool

## Available materials

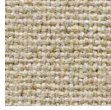
Version: 5-2-2024

### Seat and cushions | Fabric upholstery

#### Main line flax - by Camira



MLF16  
Temple



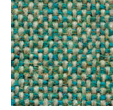
MLF20  
Upminster



MLF02  
Archway



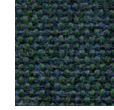
MLF10  
Newbury



MLF24  
Bayswater



MLF22  
Westminster



MLF32  
Greenford



MLF18  
Tufnell



MLF17  
Tooting

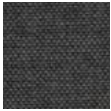


MLF13  
Leyton

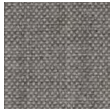
#### Remix - by Kvadrat



0753



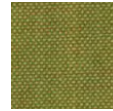
0163



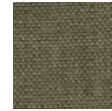
0123



0823



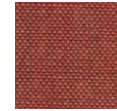
0912



0933



0612



0632



0762

#### Oceanic - by Camira



OOC01  
Flotsam



OOC08  
Bay



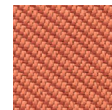
OOC14  
Riptide



OOC13  
Paddle



OOC11  
Neptune



OOC05  
Coral



OOC07  
Barrier

#### Yoredale - by Camira



UDA08  
Gayle



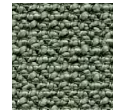
UDA25  
Leyburn



UDA17  
Ribble



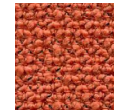
UDA10  
Cray



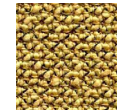
UDA04  
Hardraw



UDA02  
Kidstone



UDA03  
Askrigg



UDA05  
Simonstone

#### Vidar - by Kvadrat



0182



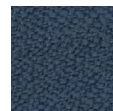
0133



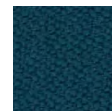
0222



0943



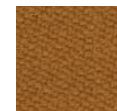
0733



0872



0582



0472